



Hop Parishes News

**June
2025**

**The Newsletter for the communities of:
Ashperton | Bosbury | Canon Frome
Munsley | Stretton Grandison
Stoke Edith | Tarrington | Yarkhill**

Munsley Pet Service

A Pet Service

will be held at St Bartholomew's Church, Munsley

on Sunday 6th July 2025

at 3:00pm

All Pets are welcome (dogs on a lead please)

plus any well behaved adults



Refreshments will be available

* COFFEE MORNING *

*Saturday 21st June
Bosbury Parish Hall*

10:00am to 12:00 noon

*Everyone welcome, catch up with friends, family, and
neighbours whilst enjoying a delicious drink and
sweet treat.*

TABLES AVAILABLE - £5.00

Enquiries to Liz Clutterbuck 01531 640415

Proceeds to Holy Trinity Church, Bosbury



A POEM FOR JUNE

Most people think of the novel, 'Wuthering Heights' when they think about Emily Bonte, but she also wrote some sensitive poetry. Here she reflects on the beauties of summer moonlight – something to read slowly on Midsummer's Night, perhaps?

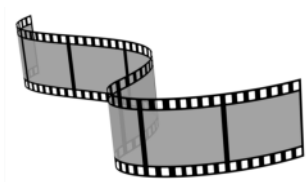
'Moonlight, Summer Moonlight' by Emily Jane Brontë

'Tis moonlight, summer moonlight,
All soft and still and fair;
The solemn hour of midnight
Breathes sweet thoughts everywhere,

But most where trees are sending
Their breezy boughs on high,
Or stooping low are lending
A shelter from the sky.

And there in those wild bowers
A lovely form is laid;
Green grass and dew-steeped flowers
Wave gently round her head.





“THE CRIME IS MINE” Cert 15 2023

on Friday 20th June 2025

Bosbury Parish Hall at 7.30pm

A French Mystery Drama set in the 1930's: A young actress is accused of murdering a film producer.



Madeleine (Nadia Tereszkievicz), young aspiring actress, lives with her lawyer friend Pauline (Rebecca Marder) in a one-bed Parisian flat that they can't afford and yearns to marry her beau—tyre empire heir André Bonnard (Édouard Sulpice). A sleazy theatre producer tries to seduce her and his body is found shortly after she leaves. The local inspector (Régis Laspalès) suspects her of the murder.

The Times..... 'fabulously silly'



Wine & Nibbles available on the night

Entrance £6

BOSBURY 100 CLUB

May Prize Winners

Jeremy Croshaw

Club Organiser



1 st	83	O Clutterbuck
2 nd	81	O Clutterbuck
3 rd	3	M Howe
	43	J Eckersley
	85	E Clutterbuck



WE ARE DELIGHTED TO WELCOME ALL OF THOSE IN OUR COMMUNITIES WHO WISH TO MARK LIFE EVENTS IN ANY OF OUR EIGHT HOP CHURCHES

To enquire about baptisms, weddings or funerals

please contact Revd Mandy Williams

07780 586846 or mandy.williams@hopchurches.org.uk

BOSBURY ORGAN RESTORATION APPEAL NEWS

THE WIND RESERVOIRS

The next stage of our plans is the re-leathering of the huge bellows. These are the original 150 year old bellows and the leather is unsurprisingly beginning to show signs of wear. As part of this stage we intend to restore the original hand pump which was in use until 1948 and still functions. It is a fascinating historical artefact and could probably even be used in case of a power cut!

Any donations or pledges of whatever size which can help us support the organ restoration will be gratefully received by our Treasurer Rob Prestidge 07960 655886.

If you want to know more about Bosbury's historic church organ please visit the church where there are leaflets on display, and do come and hear it at one of our services or concerts.

HOLY TRINITY CHURCH BOSBURY - TRINITY WEEKEND

The 8th Sunday after Easter is known as **Trinity Sunday** and as our church is Holy Trinity Church we celebrate it as our Patronal Festival. This year it falls on Sunday June 15th.

Our celebrations start with our village concert, Music for All, on Saturday 14th June at 3pm.

Then on Sunday morning at 11am we have a special Parish Communion service. Everybody is welcome to join us.

On Sunday afternoon at 3pm we will be holding a tea party to say Thank You to all the wonderful volunteers who work so hard to keep the church and churchyard open, looking beautiful and so welcoming.

Bosbury Bowls and Tennis

A great place to enjoy games of Tennis or Bowls
Available to hire for members and non-members



Bowls Bookings
Chris
07918 188419



Tennis Bookings
(by text please)
07803 427860

GRAVESTONE TOPPLE TEST

The PCCs are required to conduct an annual test of gravestones called the Topple Test.

The Topple Test applies a controlled force to the memorial at a specific height to ensure the gravestone is firm enough and that it does not cause a danger to members of the public.

Please remember it is the family's responsibility to care for the grave.

Any memorial in danger of toppling over will be laid down and the family informed.

Bosbury PCC will carry out the test between
 1st June and 30th June 2025

Mrs Francine Gifford & Mrs Alison Young
 Churchwardens of Holy Trinity Church, Bosbury

Munsley PCC will carry out the test between
 1st June and 31st July 2025

Mrs. Linda Warner and Mr. Mike Robinson
 Churchwardens of St Bartholomew's Church, Munsley



CUCUMBER SANDWICH?



It's often claimed that life is no picnic – but on 18th June it is! International Picnic Day is a chance to eat out in the open air with friends or family.

Placed conveniently in the middle of June, for many people this means that the weather should be fine and the sun shining. But even if the weather doesn't want to cooperate, an inside picnic can be a great substitute. Just spread a blanket out on the floor and enjoy an imaginary alfresco meal!

So get that picnic basket ready and get started celebrating International Picnic Day!

Picnics can of course take on many guises, family picnics with kiddies, a romantic picnic for lovers, picnics with friends or even a picnic on your own with perhaps a pet, portable radio or a book for company.

And the contents of your picnic hamper need to reflect the nature of the attendees- so time spent planning your ideal fare is well spent. Ice cream is a bit of an obvious no-no but choose freely from the modern picnic staples of sandwiches & wraps; cheeses, fresh fruits; dips, cakes and nuts. You will know best what your picnicking companions will most enjoy.

Or, for the full-on celebration of Englishness (even though the word picnic is stolen from the French) as fans of Jane Austen novels will know, 19th-century picnics in England became elaborate social occasions, with menus featuring a wide range of cold meats and pies that took days to prepare.

Alternatively, a trio that evokes the opulence and nostalgia of *Brideshead Revisited*! Evelyn Waugh's novel is drenched in the golden haze of aristocratic indulgence, where plover's eggs, a delicacy, symbolise extravagant taste. Champagne, of course, is ever-present, chilled in a cooling river perhaps and fizzing through moments of marking both the exuberance and eventual decline that the protagonist, Charles Ryder, finds himself drawn into.

It's a book brimming with longing, faith, and the bittersweet passage of time, told with Waugh's signature wit and poetic melancholy. Have you read it?

Whatever you decide, the key words are plan ahead, drink responsibly, choose your beauty spot with care (and if appropriate, permission) and take your litter home with you.

Plus insect repellent can be a great add on.

But most of all, enjoy!





ST BARTHOLOMEW'S, ASHPERTON

NEW* Cleaning Group *NEW

Second Thursday of each month we will be meeting in church to clean. Please come along and help us to sweep, dust, polish and vacuum.

Gardening Group

First Tuesday of every month, at 10am, weather permitting, we meet in the churchyard to do some 'gardening'.

Please come along and help keep our lovely churchyard looking at its best. Please bring any tools (strimmers, loppers etc.) which may be useful.

There will be tea, coffee and biscuits to keep us going.

For further information please call

Anna on 01531 670378

Music at Bosbury 2025

Dates for your diary

All concerts feature the legendary Bosbury refreshments!

Saturday June 14th at 3pm

Music for All

is our concert of music for the Village and Friends given by the Village and Friends.

Come and share your favourite poem; singers and musicians welcome.

We need your talent! Contact Esther Kay 01531 670634

FREE concert; retiring collection.

Sunday July 20th at 3pm

The Garrick Singers

Hereford's choir for the over 55s present a varied programme of songs

Tea and Cake concert

FREE concert; retiring collection

Sunday September 7th

Organ Open Day

with Choral Evensong

details to follow

Saturday November 8th at 7.30pm

Folk at the Fold

present A Celebration of Winter

Open mic first half - local performers welcome to share music, song, poetry.....

In Bosbury Parish Hall

Sunday December 7th at 3pm

Vital Spark

We welcome back the renowned West Gallery music choir with instruments to present a Christmas programme in jolly Thomas Hardy style.

**St Bartholomew's Church,
Ashperton**

Coffee Morning

Saturday 7 June 2025

10:30 to 12 noon

*to celebrate the Silver Anniversary of the
making of Figures and Kneelers depicting
2000 years of life in Ashperton*



KATHERINE DE GRANDISON,
COUNTESS OF SALISBURY,
WELCOMES YOU TO
ST BARTHOLOMEW'S

You are warmly invited to...

**Bosbury Brew
Cafe**

**Every Tuesday
@12:00 – 2:30pm
In Bosbury Church**

Homemade Soup with Bread Rolls
Toasted Sandwiches
Cakes and Scones
Tea and Coffee

Everyone Welcome
Donations only!



The Garden in June



June is with us and again we can enjoy the colours and scents of our peonies, lupin, delphiniums, roses etc. which are blooming in profusion after a warm and dry May.

The lack of rain has made me re-think how I water: instead of giving everything a frequent, quick splash, we are advised to water thoroughly but less frequently, either in the morning, when plants start to transpire and the foliage/soil has a chance to dry off before the night-time slugs come out, or in the evening when less water will evaporate. Watering thoroughly allows the water to get well down to where it is needed at the tips of the roots, rather than just wetting the leaves, which can cause fungal problems. Keep an eye on containers and hanging baskets which will need more frequent watering than plants in open ground and feeding every 2-4 weeks.

The Flower Garden

We should have left any chance of frost behind us so can plant out the summer bedding and if you still have some gaps, it's worth sowing some hardy annuals like cornflowers, nasturtiums, sunflowers, calendulas at the beginning of the month.

Spend a moment supporting tall flowering spikes, like delphiniums, to avoid breakages if it is windy. Sweet peas also benefit from tying in to encourage them to climb rather than sprawl on the ground and if you can tie climbing and rambling roses down horizontally, it will cause side-shoots to grow along the length of stem and result in more flowers.

Does anyone use the Chelsea chop in their garden? This is a pruning technique for summer flowering perennials such as penstemon, phlox, sedum, aster etc to encourage more compact growth and delay or extend flowering. This is done by cutting back by a third to a half in late May, the time of RHS Chelsea Flower Show, (early June is OK too) either the whole plant, to delay all flowers, or just part of the plant, to extend the flowering over a longer time. Give a good water and some feed afterwards!

The Vegetable Garden

At last we can empty our greenhouses and reclaim window sills as all the runner & french beans, courgette, pumpkin, squash and sweetcorn can safely be planted out. If the weather turns wet, I find they still all benefit from years of accumulated squash bottle cloches, especially from slugs, until they are up and growing strongly.

Carry on sowing beetroot, carrots and lettuce for succession. If the weather is warm (over 20°C) this may affect lettuce seed germination; try putting the seed in the fridge the night before you sow, which should help.

Broccoli can also be planted out; purple sprouting will be ready to harvest from late February until late April. Calabrese is in the same family, but produces big, green heads from mid-summer to early winter. A word of warning: last year I grew white sprouting broccoli for a change. The plants were large and healthy, full of little spears, but bitter and inedible when cooked; how disappointing! Google came to the rescue and suggested blanching in boiling water for one minute before chilling in cold water, then reheating very briefly before eating. It worked a treat!

Happy Gardening!



A LETTER FROM LINDE

Dear Friends,

As the beautiful blossom of May fades and we approach midsummer and even longer hours of daylight, life can seem lighter, easier and warmer. Amidst the lushness of nature, all is green and growing. As I wander around my garden, trying to focus on the many flowers rather than rogue weeds, I am led to reflect on how our faith in the goodness of the world might be strengthened at this time. 2025 has been a year of upheaval and uncertainty for many, so taking time to immerse ourselves in God's creation, to slow our pace, seems more needful than ever. I often think June seems the wrong month to lead us into Midsummer or the summer solstice – surely, we might feel, that belongs in July, at the very least? I certainly don't want to think of nights just starting to draw in as June progresses! So take time to absorb the special atmosphere of summer; hold that sense of ease in your heart; let your breathing slow; feel the warmth on your skin; relax into the beauty of a summer evening, perhaps even read aloud slowly, Emily Bronte's poem that I have selected for this month. Enjoy also, the warmer nights and drink in the beauty of gentle moonlight.

"I arise today
In the name of Silence
Womb of the Word,
In the name of Stillness
Home of Belonging,
In the name of Solitude
Of the soul and the Earth.

I arise today
Blessed by all things,
Wings of breath,
Delight of eyes,
Wonder of whisper,

Amen"

Intimacy of touch,
Eternity of soul,
Urgency of thought,
Miracle of health,
Embrace of God.
May I live this day
Compassionate of heart,
Clear of word,
Gracious in awareness,
Courageous in thought,
Generous in love.

Enjoy your midsummer! With blessings, Linde



Sorry! There is no



CAFÉ CHURCH, BOSBURY

in June as

Sunday JUNE 15th is Bosbury's Patronal Festival
with a Parish Communion at 11am.

Hope to see you there!

Our next Café Church is on Sunday July 20th.



Parish Council Details

Parish Council	Date	Time	Location	Meeting Schedule
Ashperton	31/07/25	7:30pm	Ashperton Village Hall	Bi-monthly on the last Thursday of the month
Bosbury & Coddington	05/06/25	7:30pm	Coddington Church	1 st Thursday of each month excluding January and August
Pixley & District incl. Munsley	14/07/25	7:30pm	Munsley Community Hall	Bi-monthly on the second Monday of the month
Stretton Grandison Group incl. Canon Frome	21/07/25	7:30pm	St James Church Canon Frome	Bi-monthly on the third Monday of the month
Humber, Ford & Stoke Prior incl. Stoke Edith	16/07/25	7:30pm	Risbury Village Hall	Bi-monthly on the third Wednesday of the month
Tarrington	14/07/25	TBC	Lady Emily Community Hall	Bi-monthly on the second Monday of the month
Yarkhill	July TBC	TBC	TBC	Bi-monthly on a Tuesday

Please check these dates with your Parish Council if you are planning to attend.

Parish Council	Parish Clerk Contact	Website
Ashperton	Mrs Janet Chester clerk@ashperton-pc.gov.uk	https://ashperton-pc.gov.uk
Bosbury & Coddington	Mrs Emma Thomas bcparishclerk@gmail.com	bosburyandcoddington.co.uk
Pixley & District incl. Munsley	Diane Baldwin clerk@pixleyanddistrictpc.org.uk	pixleyanddistrictpc.org.uk
Stretton Grandison Group incl. Canon Frome	Mrs Emma Thomas pcgroupclerk@gmail.com	strettongrandisongpc.org.uk
Stoke Edith	Allan M Drew clerk@hfpsgroup.org.uk	hfpsgroupparishcouncil.gov.uk
Tarrington	Mr Paul Hayden tarringtonparishclerk@gmail.com	tarringtonpc.org.uk
Yarkhill	Ms Sallyanne Batchelor yarkhill@live.co.uk	yarkhillparish.co.uk

JUNE 2025 SERVICES

	1st June	8th June
	7 th Sunday of Easter / Sunday after Ascension	Pentecost
Readings	Acts 1.1-11 Ephesians 1.15-23 Luke 24.44-53 Psalm 47	Acts 2.1-21 Romans 8.14-17 John 14.8-17,25-27 Psalm 104.26-37
Ashperton	Joint service with Stretton Grandison	9:30 CW Parish Communion
Bosbury	6:00pm Evensong	11:00 CW Parish Communion
Canon Frome		
Munsley		9:30 Morning Worship
Stoke Edith	Joint Service with Yarkhill	
Stretton Grandison	9:30 BCP Parish Communion (joined by Ashperton)	
Tarrington	Joint Service with Yarkhill	11:00 CW Parish Communion
Yarkhill	11:00 CW Parish Communion (joined by Stoke Edith and Tarrington)	

BRINGING IN THE LIGHT

*Come and enjoy some peace in our next
reflective service of prayer:*

*Thursday, 5th June at 6pm
At Canon Frome Church*



Thursday Weekday CW Morning Prayer

8:30am in Bosbury



	15th June	22nd June	29th June
	Trinity Sunday	1st Sunday after Trinity – Proper 7	2nd Sunday after Trinity – Proper 8
Readings	Proverbs 8.1-4,22-31 Romans 5.1-5 John 16.12-15 Psalm 8	Isaiah 65.1-9 Galatians 3.23-29 Luke 8.26-39 Psalm 22.19-28	1 Kings 19.15-16,19-21 Galatians 5.1,13-25 Luke 9.51-62 Psalm 16
Ashperton	9:30 CW Parish Communion	9:30 CW Parish Communion	All together Parish Communion Canon Frome 10:30am
Bosbury	11:00 Patronal Festival Parish Communion	9:30 CW Parish Communion	
Canon Frome			
Munsley		9:30 CW Parish Communion	
Stoke Edith	Joint Service with Yarkhill		
Stretton Grandison			
Tarrington	9:30 Morning Worship	11:00 CW Parish Communion	
Yarkhill	11:00 Morning Worship (joined by Stoke Edith)		

Bosbury Sunday Services

Our regular pattern of church services:

1st Sunday Evening Prayer (often sung Evensong) at 6pm

2nd Sunday Parish Communion at 11am

3rd Sunday Café Church at 9.45 for 10.30am

4th Sunday Sung Parish Communion at 9.30am

Weekday Communion

The Hop Churches hold a weekday service of Holy Communion in
Tarrington Church every Wednesday Morning at 10am

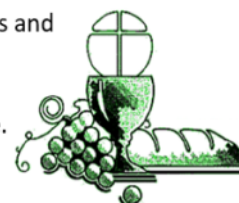
The service is followed by refreshments and an opportunity to spend time together with friends and neighbours from across the benefice.

A warm welcome is extended to everyone

Please get in touch with Revd Mandy Williams if you require further information or assistance.

07780 586846

mandy.milliams@hopchurches.org.uk



LOCAL SERVICES

For a future free from Domestic Abuse

West Mercia Women's Aid are here to support you if you are living with domestic abuse

Support for Women:

WMWA 24 hour Helpline: 0800 783 1359

Email: helpline@wmwa.org.uk

LiveChat: Available Monday – Friday 9:00am – 5:00pm

Support for Men:

Men's Domestic Abuse 24 hour Helpline: 0800 014 9082

Email: mdas@wmwa.org.uk

LiveChat: Available Monday – Friday 9:00am – 9:00pm

www.westmerciawomensaid.org



Ledbury Food Bank

Unit 1, Homend Trading Estate, Ledbury HR8 1AR (next to Ledbury Train Station)

We are open 10am to 12 noon every Wednesday and Friday and 6pm to 8pm every Thursday evening.

Contacts:

You can telephone us during opening hours on 07851 283092

Email—FOOD@LEDBURYFOODBANK.ORG

www.LEDBURYFOODBANK.ORG

Donate Food and Toiletries:

Donation trolleys are in Tesco, the Co-Op and One Stop. Also Ledbury Food Bank during opening hours, most churches, Halo Leisure Ledbury and Leadon Bank.

Volunteer:

The foodbank is run entirely by unpaid volunteers who passionately believe that no one should go hungry, please email for further information.

Bosbury Post Office

Bosbury Parish Hall, Ledbury HR8 1PX

The mobile Post Office sets up in the foyer of Bosbury Parish Hall every Tuesday afternoon between 15:00 and 16:45 providing the following key services:

Everyday Personal & Business Banking:

Cash Withdrawals; Cash Deposits; Cheque Deposits

Driving:

Vehicle Tax

Travel:

Foreign Currency – Euros Available

Travel Insurance

National Express – Tickets



Acer Tree Services (Hereford) Limited

Alumhurst, Woolhope HR1 4QL – 01432 860839

Mobile 07774 134577 www.acertreeservices.com

With over 30 years experience in arboriculture, we offer a professional and reliable solution for customers in all aspects of tree management.



1. ARB approved contractor
2. Free written quotes and advice
3. Superb customer service
4. Trained and experienced staff
5. Stump grinding
6. Waste removed
7. Fully insured

Taking on projects of all sizes, we are committed to delivering a high quality service to all of our customers whilst ensuring that the impact to the environment is kept to a minimum.

Our staff are trained, experienced and passionate. Our expertise allows us to develop a tailored approach to each free quotation and often far exceeding expectations.

Kiln Dried Hardwood

FIREWOOD



www.
getlogs
.co.uk

01531 825236

Annie Henderson Soft Furnishings

Curtains, blinds, loose covers, and home accessories made using your own fabric

Alteration service for soft furnishings and clothing also available

City and Guilds qualified

For a free quotation please contact:

07958 292502

annie@needleseye.me.uk



EARWAX REMOVAL CLINIC & INDEPENDENT HEARING CENTRE

- Family Owned Hearing Practice Established Since 1988
- Microsuction Earwax Removal Clinic
- Hearing Assessments
- Independent Advice
- The Latest Hearing Aid Technology
- Comprehensive Aftercare Plan



**SCOTTWROE
HEARING**
& EARWAX REMOVAL CLINIC

6 Blackfriars Street, Hereford HR4 9HS
(50yds from Waitrose car park)

01432 367861

hereford@scottwroehearing.co.uk

www.scottwroe-hearingcentre.co.uk

74 Barnard's Green Road
Barnard's Green, Malvern WR14 3LY

01684 666449

malvern@scottwroehearing.co.uk

Three Counties Chimney Sweep

Trading Standards Approved



worcestershire
county council

**TRADING
STANDARDS**

APPROVED

working in partnership with

Checkatrade

- *All Chimneys & Flues Swept
- *Cowl & Pot Fitting Service
- *Stove & Liner Installations
- *Nest & Blockage Removal
- *Stack & Roof Repairs
- *Fully Insured

Call Ian on:

Tel: 01684 891005 Mobile: 07403 277 436

Your Local Accredited Chimney Sweep





All work
Guaranteed
Competitive
Prices

"TRADING ON OUR REPUTATION"

- Roof Repairs
- Flat Roofs
- UPVC Facias
- Soffits & Guttering
- Moss Removal
- General Property Maintenance
- Dry Systems

Call today for your
free video survey

01531 825917
07776 055181



HOOPERS CLASSES!

JUNE/JULY

(Similar to Dog Agility but more accessible)

Classes starting near Bosbury

Wed/Thurs/Fri evenings or Sat morning
£70 for 6 sessions of 1 hour each

Come and try a fun, accessible sport
with your dog and build a magical
bond between you!

Contact: Julia Shimwell

Caninemagic123@gmail.com or

Tel 07854 037808

Also providing

Back to Basics 1-1 training

Tailored Dog Sport 1-1 training

Cathedral Park Retirement Village, Holmer, Hereford

*Supporting Independent
Lifestyles*

platform
housing group

Homes for your retirement providing a secure, comfortable living space for those 55+ (with care needs) or 60+. Featuring on site amenities including café, hair dresser, shop and mobility vehicle storage with charging, and a community hall for local events.

Call: 0121 788 7699

Email: cathedral.park@platformhg.com



SEZ ELECTRICZ

**YOUR FRIENDLY
LOCAL ELECTRICIAN**

**Part "P" Qualified
For all your domestic electrical
needs**

INCLUDING

**Fault finding, extra sockets or lights
New fuse boards & rewires
Security lights
Routine safety testing etc.**

**Free advice
Competitive rates
No job too small**

**Please phone MIKE on:-
Tel: 01885 490726
Mobile: 07957 391974**



**The
Therapy Shed**

Brook Lane, Bosbury

Holistic treatments for your physical health & emotional well-being.

- Bowen Therapy
- Kinesiology
- Scar Release
- Reflexology
- Hopi Ear Candling
- Reiki & more

Gift vouchers available

Rachel: 07818 098323

www.thetherapyshed.uk



@the_therapy_shed



@thetherapyshedbosbury



**TYLER ROBERTS
Domestic Plumbing
& Heating**

TYLER ROBERTS

07977 257645

01886 880671

Tylerroberts33@hotmail.com

- Cylinders / Unvented
 - Loft Tanks
 - Tiling
- Taps and Washers
- Central Heating
 - Bathrooms
 - Kitchens

24 hr 7 days a week call out service



Waking up exhausted, aching and overwhelmed?

You're not broken. You don't need to push through.

You need rest, support, and clarity.

Join Lucia, Kate, Jess and other experts for:



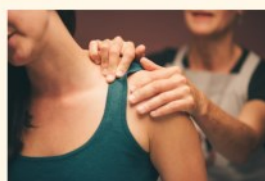
education on hormones,
symptoms, and solutions



Optional: personalised testing
from £15



a space to talk,
breathe and be



restorative bodywork



mindful movement

Friday 9-4
20th June

early bird £87



nutritional and sleep
advice, and more...

Our Bloom.in.Menopause Retreat
is a one-day sanctuary to help you reconnect with
your body, understand your symptoms, and feel
supported in a way you may never have before.

AT: SALVATION AT BAYNHAMS

£117
15/06/25

07506 906614

www.unwind-clinic.co.uk

RESERVE
YOUR
SPOT

See me @Hellen's Garden Festival 7-8 June

heating SOLUTIONS

boiler servicing and maintenance

central heating installations

landlord gas safety certificates

t: 01531 671000



e: heating.solutions@yahoo.co.uk

www.qualityheatingsolutions.co.uk





PestArrest Pest Control

For all your local pest control requirements

All domestic and commercial pests covered

RSPH Level 2 qualified
Fully insured

Telephone **Jon Staples** on:
07894 739464

Email:
pestarrest.pestcontrol@outlook .com



HOLLOWAYS

Contemporary Country Living

LIVING, DINING & GARDEN FURNITURE
LIGHTING | RUGS | ACCESSORIES | INTERIOR DESIGN

A GREAT DAY OUT FOR HOME & GARDEN-LOVERS

NEPTUNE

Sofas | Dining Tables | Homeware

Gift Shop

Hair & Beauty Salon



Book Online or call
01886 884665

Locally-sourced Seasonal Menus | Outdoor Seating
BRUNCH | LUNCH | TRADITIONAL AFTERNOON TEA

PLUS...Garden Antiques, Terracotta Pots & Architectural Salvage

www.holloways.co.uk

Lower Court, Suckley, WR6 5DE | Monday-Saturday 9am-5pm

CHIMNEY SWEEP

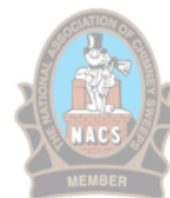
Andy Johnson

Certificates Issued
Evening/Weekend Sweeps
Stove Maintenance

Tel: 01886 821933
07798 790913



www.andysweeps.com



TOLLEYHOME

S E R V I C E S

- Wood Burner & Multi Fuel Stove - Installation & Servicing
- Chimney Sweeping & Maintenance
- Window Fitting Service - New & Replacement
- Property Maintenance - inc Garden Repairs
- Gutter Repair, Replacement & Cleaning



Call Stu: 07867 675939

Email: info@tolleyhomeservices.co.uk

Website: tolleyhomeservices.co.uk

FUSION

PLUMBING AND HEATING

- Heating installations
- Boiler installations
- Bathroom installations
- Air source heat pump installations
- Unvented hot water systems
- Underfloor heating installations
- Radiator installation and replacement

Duanne Hill

Mobile: 07773 395803

Info@fusionplumb.co.uk

www.fusionplumb.co.uk





Antique Restoration

French Polishing and French Cane Work

Simon Brandreth

Antique & Modern Furniture & Effects
Restored To The Highest Standard

07725799554

frenchpolisherledbury@gmail.com

Free Estimate

Pussy Cat Cattery



**Luxury boarding cattery in an
idyllic, safe and calm
location for cats only**

**Built and run to Feline Advisory
Bureau guidelines**

**Seville Cottage,
Suckley, Worcester,
WR6 5EQ**

www.pussycatcattery.co.uk

01886 884867



Leigh Sinton Garden Machinery

Unit 6 Crowcroft Farm, Leigh Sinton, Worcester, WR13 5ED

- Chainsaws
- Blowers
- Hedge Cutters & Trimmers
- Lawn Mowers
- Ride on Mowers
- Utility & Dump Carts
- Towed Spreaders & Brushes
- Kombi Tools & Multi Tools
- Handheld Tools
- Oils and Greases

Friendly service, sales,
maintenance and repairs.

The highest quality
Garden Machinery,
Tools & Equipment from
Top Brands.

<https://lsgardenmachinery.co.uk>

Open:
Mon Fri 8.30-5pm
Saturday 9am-12pm
Sunday Closed



Call Us: 01886 833751



Garden Machinery

Our HDCSS Services

One to One Home Visits

Have a meeting with one of the team to answer any questions, discuss strategies and provide person-centred support and advice



Memory Cafes

Pop along to one of our Cafes to enjoy a cup of tea and slice of cake with other like minded people, whilst enjoying a variety of activities and guest speakers



Carer Support

Share experience and receive support, advice and understanding at one of our Carers Groups- either online or in person!



Telephone Support Line

Call us on **01432 804480** for advice, information, or even just to unload your stress! Our Support Line is open to all Mon- Fri 9am-5pm



Review Calls

Bi-monthly phone calls to check in and see how things are going, to offer support that is relevant for any issues or concerns that have arisen, and to offer a listening ear.



For more information, contact charlotte.banks@dementiamattershere.org.uk or call **01432 804480**

DEMENTIA MATTERS
HERE fordshire

Registered Charity No: 1187352

CONTACTS

CHURCHWARDENS:

Ashperton	Mrs Colleen Gardiner Mrs Freda Helme	01531 670076 01531 670586
Bosbury	Francine Gifford Alison Young	01531 641779 01531 640611
Canon Frome	Debbie Davies Roy Manwaring	01531 671210 07986 877341
Munsley	Mrs Linda Warner Mr Michael Robinson	01531 632344 01531 670356
Stoke Edith	Mr Rupert Foley Pauline Powell	01432 890269 01432 850132
Stretton Grandison	Mrs Jenneke Bryant	07403 311132
Tarrington	Tim Woods (Local Lay Minister)	07772 170837
Yarkhill	Mr Ashley Fortey Pauline Powell	07894 728762 01432 850132

TREASURERS:

Ashperton	Mrs Freda Helme	01531 670586
Bosbury	Mr Rob Prestidge	07960 655886
Canon Frome	Mr Peter Davies	01531 671210
Munsley	Carole Powell-Tuck	01531 670242
Stoke Edith	Mr Rupert Foley	01432 890269
Stretton Grandison	Mr Doug Smith	01531 579223
Tarrington	Mr Graeme Forrester	01432 890440
Yarkhill	Mrs Julia Savagar	01432 890401

NEWSLETTER:

Please email hopchurchnews@gmail.com

- If you wish to contribute to the next issue, it would be appreciated if you could ensure that these are sent in by the 15th of the month.
- To ask that you are sent the colour online version each month.

The newsletter is also published on the Holy Trinity church website <https://holytrinitybosbury.org/> and can be found under the menu option News v Newsletter.

WE ARE FARMING MINDS



We are Farming Minds registered charity has been set up by farmers for farmers to tackle mental health in the farming community within Herefordshire.

How can we help?

24 Hour Support Line:

We run a **FREE 24 hour Support Line 7 days a week** for farmers and their families within Herefordshire who are feeling distressed and need someone to talk to anonymously.

Counselling:

We provide **fully funded counselling to anyone in the Herefordshire farming community** who may be in emotional distress.

Training:

We offer **FREE mental health awareness training** to anyone living or working in or with the farming community in Herefordshire.

Social Events:

We run a series of **FREE social events throughout the year** to break the isolation often felt by the farming community in Herefordshire.

Befriending:

Befriending volunteers offer companionship and support to people who are isolated and lonely – they may visit you at home and/or phone for a regular chat. A befriender can offer conversation and a listening ear to those that need it.



'Taking the bull by the horns' to tackle Mental Health in the farming community

Call our Support Line:

0808 802 0070

Or text:

07786 203 130

General enquiries: wearefarmingminds@gmail.com

www.wearefarmingminds.co.uk

Registered charity number: 1191461

WeAreFarmingMinds

HOLY TRINITY BOSBURY

Saturday 14th June at 3pm

Music for All!

Our popular village concert!
Music, poetry and more, performed
by Bosbury Village and Friends.

Audience members and
performers welcome!
Contact Esther Kay on 01531 670 634

Free Event
Donations Invited
Refreshments

